



AL KILANI  
INNOVATING HOMES

# About

---

Al Kilani Trading was established in 1979 in Abu Dhabi, United Arab Emirates. It's one of the main wholesale & retail businesses of furnishing and upholstery whereby it offers a wide range of fabrics, jacquards, chennelle, velvet etc. along with all the other materials needed for curtain making such as curtain rails, hooks, tapes etc.

Al Kilani Trading Establishment is headquartered in Abu Dhabi, United Arab Emirates with branches in Dubai, Sharjah, Al Ain, Doha (Qatar), Oman, and Bahrain; where we supply all materials related to curtains and upholstery everywhere throughout other regions whether it's in the gulf or beyond it.

---

## US

---

Our Customers are :

- Contractors
  - Interior Designers
  - Projects
  - Decoration Shops
-





**THE CHOICE OF  
PRACTICALITY & COMFORT.**



# EXCLUSIVE QUALITY ROMAN RAILS



**K6010**

EXCLUSIVE QUALITY  
ROMAN RAILS

**QUALITY  
DETAILS**



# ACCESSORIES ROMAN RAILS



**K6010**  
EXCLUSIVE QUALITY  
ROMAN RAILS



**K6013**  
BRACKET



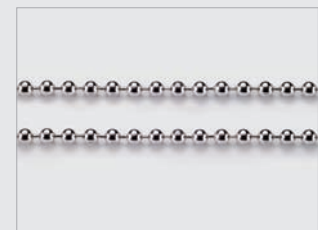
**K6014**  
CROD DRUM



**K6015**  
CONTROLLER



**K6016**  
END CAP



**K6012**  
METTAL CHAIN



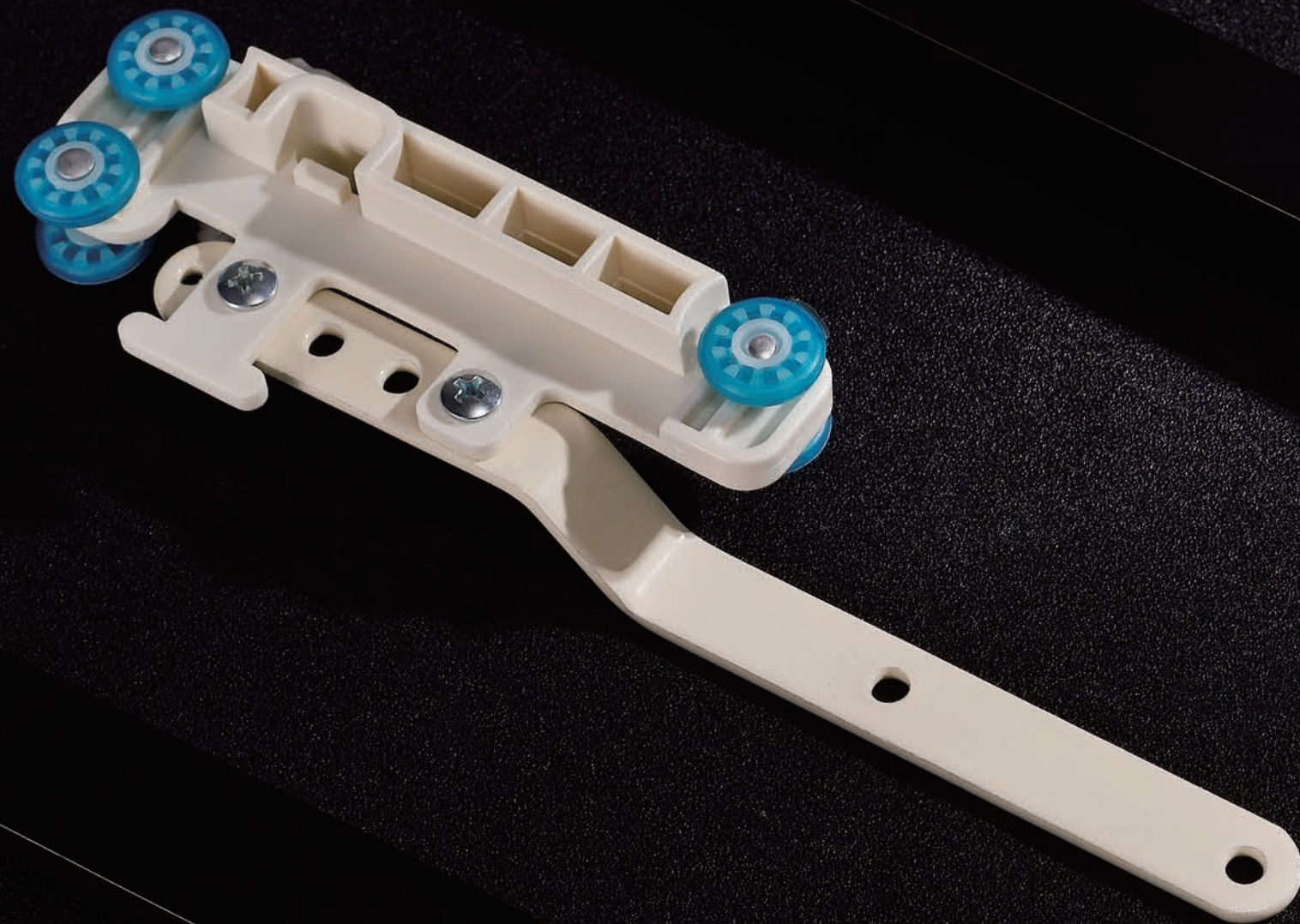
**K6011**  
FIBER CHAIN

**BE UNIQUE**

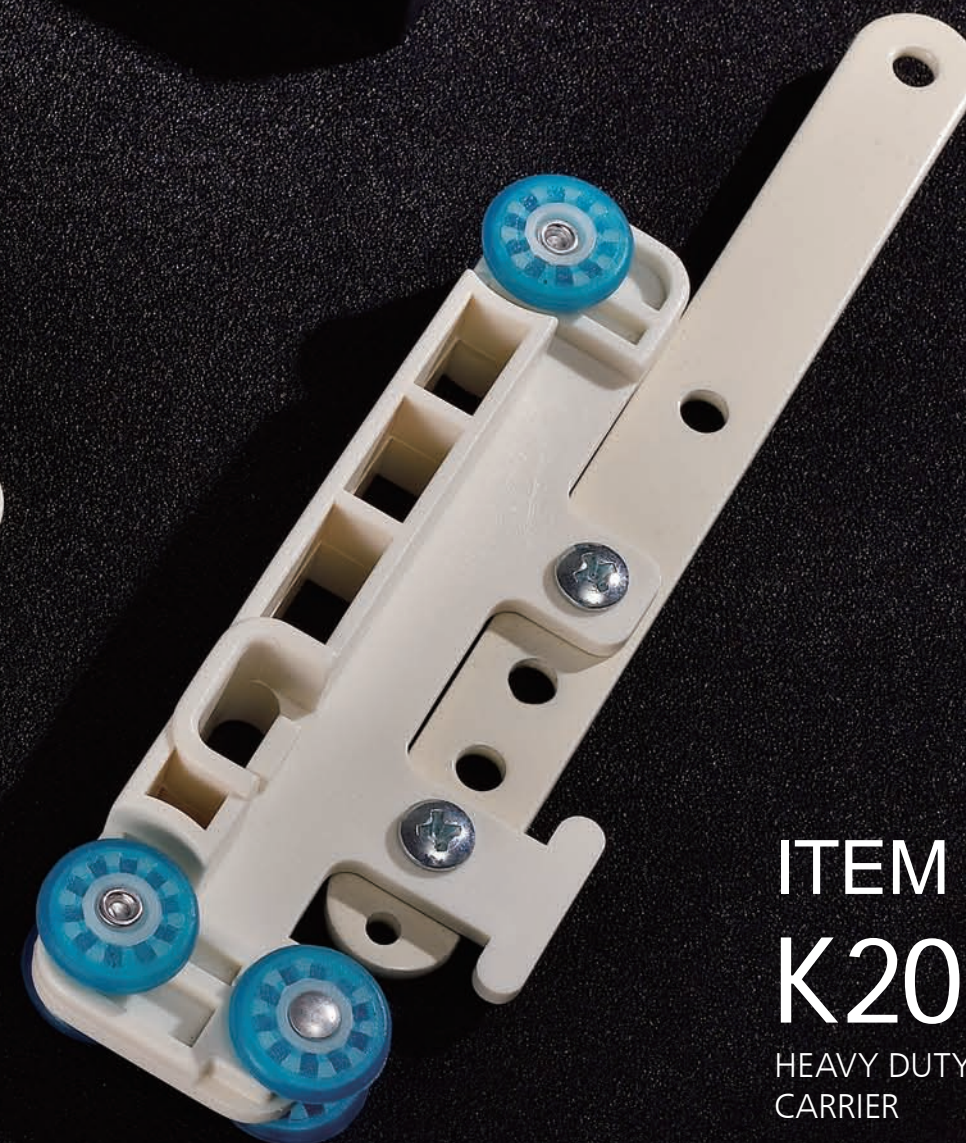


Redefines the ease of installation .....





**DESIGNED FOR  
LONGEVITY**



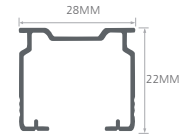
**ITEM NO.:  
K2018**  
HEAVY DUTY MASTER  
CARRIER



# HEAVY DUTY TRACK WITH CORD



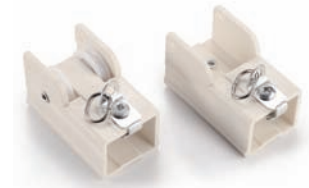
**K2010**  
HEAVY DUTY TRACK  
WITH CORD



**K2010**  
HEAVY DUTY TRACK  
WITH CORD



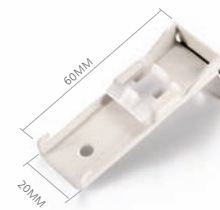
**K2019**  
RUNNER



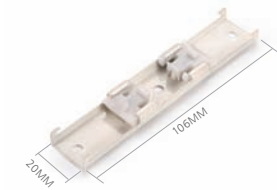
**K2015**  
PULLY SET



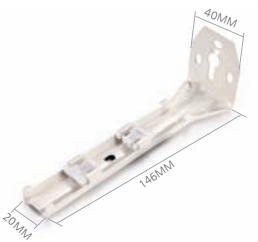
**K2012**  
SINGLE CEILING BRACKET



**K2014**  
SINGLE WALL BRACKET



**K2011**  
DOUBLE CEILING BRACKET



**K2013**  
DOUBLE WALL BRACKET



**K2018**  
HEAVY DUTY MASTER  
CARRIER



**K2017**  
CORD WEIGH



**K2016**  
NON STRETCH CORD







# AMERICAN RAILS

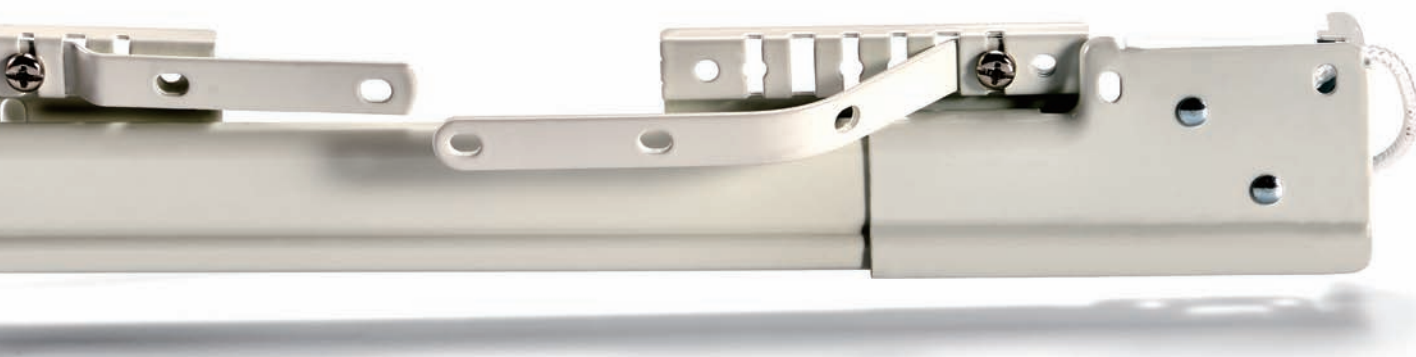
## Extendable



**K1010**  
AMERICAN RAILS



# AMERICAN RAILS Extendable



WE STAND STRONG  
BEHIND OUR QUALITY.

Available sizes

- #1) 071-120cm
- #2) 120-210cm
- #3) 160-290cm
- #4) 210-390cm
- #5) 290-550cm



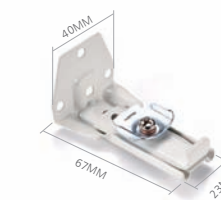
**K1010**  
AMERICAN RAILS



**K1016**  
RUNNER



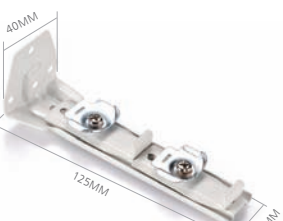
**K1013**  
SINGLE BRACKETS  
(SINGLE)



**K1015**  
CENTER SUPPORTS  
(SINGLE)



**K1011**  
SIDE BRACKETS



**K1012**  
CENTER SUPPORTS  
(DOUBLE)



**K1017**  
MASTER CARRIER



**K2016**  
NON STRETCH CORD



**K1014**  
CORD HOOK



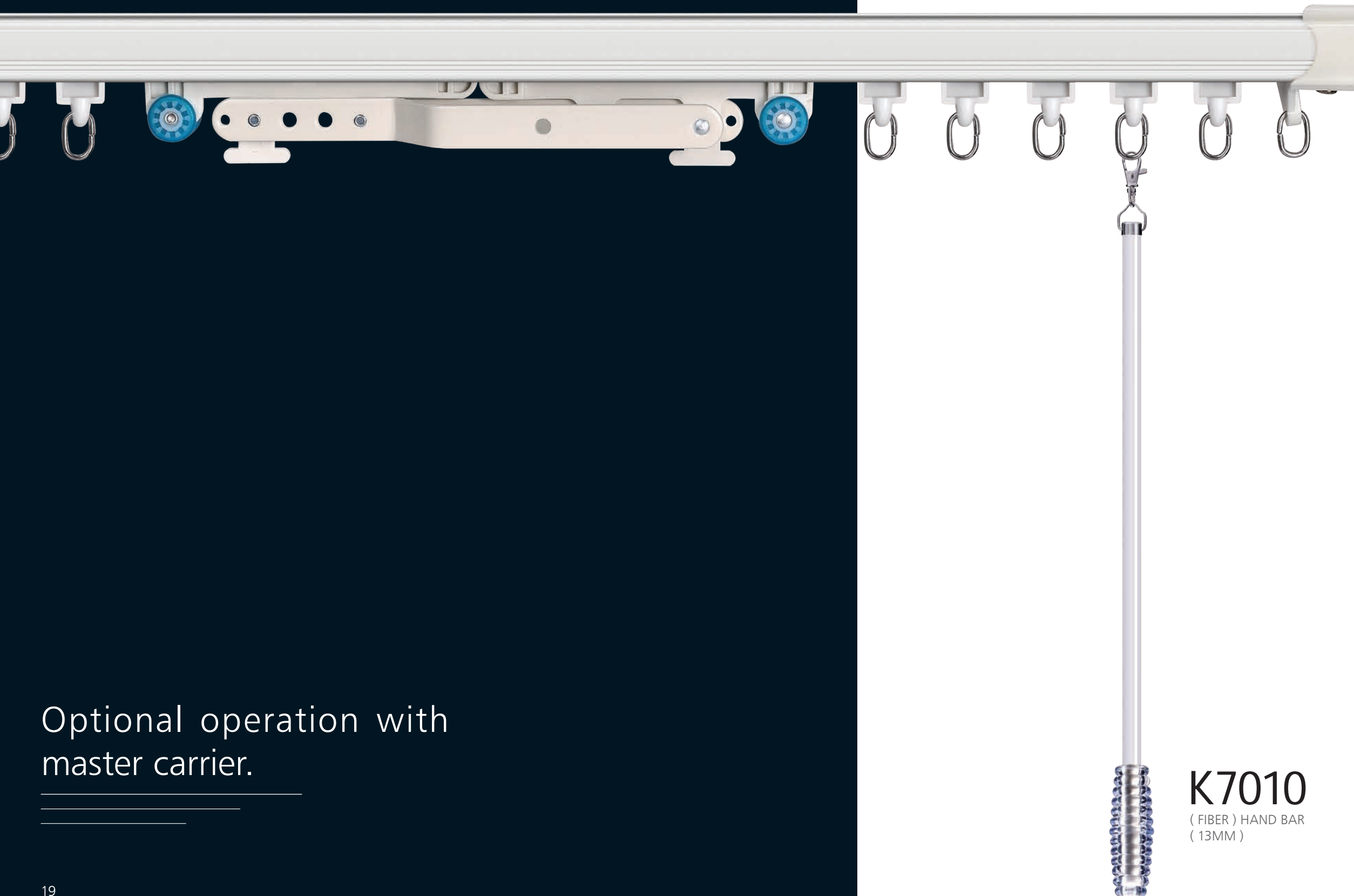
# HEAVY DUTY M-TRACK

**K3010**  
HEAVY DUTY M-TRACK

Optional operation with  
master carrier.

---

---



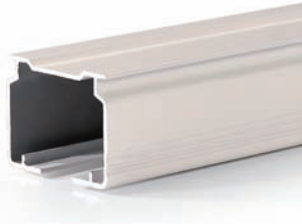
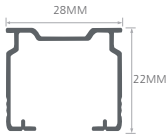
**K7010**  
( FIBER ) HAND BAR  
( 13MM )



# HEAVY DUTY M-TRACK

K3010  
HEAVY DUTY M-TRACK

Simple hand operation.



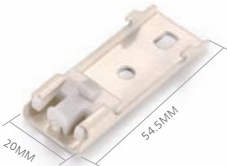
K3010  
M-TRACK HEAVY DUTY



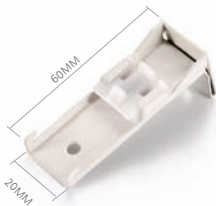
K2019  
RUNNER



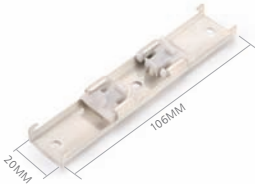
K3017  
END CAPS



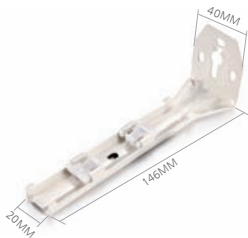
K2012  
SINGLE CEILING BRACKET



K2014  
SINGLE WALL BRACKET



K2011  
DOUBLE CEILING BRACKET



K2013  
DOUBLE WALL BRACKET



K2018  
HEAVY DUTY MASTER  
CARRIER



K3015  
STRIGHT CONNECTER



K3016  
CORNER CONNECTER



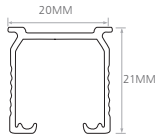
**AL KILANI**  
**INNOVATING HOMES**

"Home is where you make it"





# M-TRACK PREMIUM



**K4010**  
M-TRACK PREMIUM



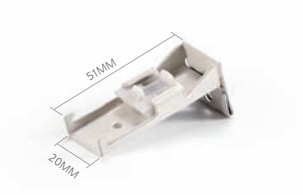
**K4016**  
RUNNER



**K4018**  
END CAPS



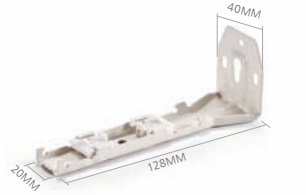
**K4012**  
SINGLE CEILING BRACKET



**K4014**  
SINGLE WALL BRACKET



**K4011**  
DOUBLE CEILING BRACKET



**K4013**  
DOUBLE WALL BRACKET



**K4019**  
MASTER CARRIER



**K4015**  
STRIGHT CONNECTER



**K4017**  
CORNER CONNECTER



# M-TRACK PREMIUM



Optional operation  
with master carrier.

# FLEXIBLE TRACK HEAVY DUTY



## K5010

FLEXIBLE TRACK  
HEAVY DUTY

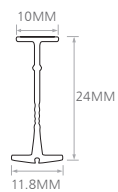




**K5010**  
FLEXIBLE TRACK  
HEAVY DUTY



## Spaces Turned Into Art



**K5010**  
FLEXIBLE TRACK  
HEAVY DUTY



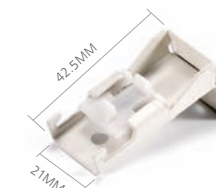
**K5016**  
RUNNER



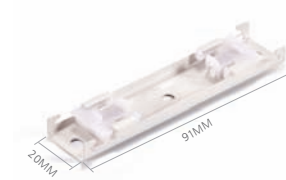
**K5015**  
END CAPS



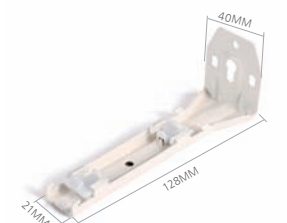
**K5013**  
SINGLE CEILING BRACKET



**K5014**  
SINGLE WALL BRACKET



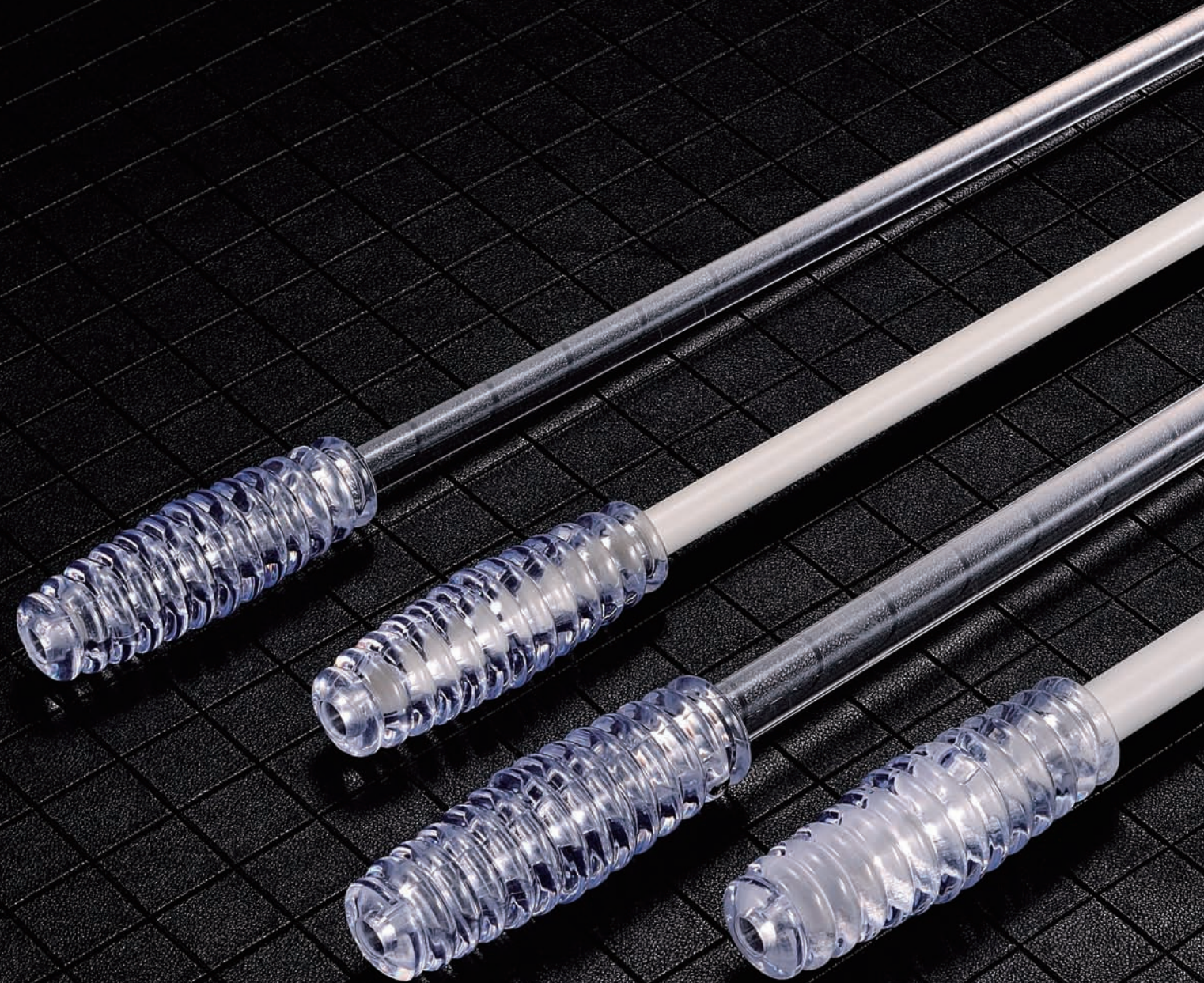
**K5011**  
DOUBLE CEILING BRACKET



**K5012**  
DOUBLE WALL BRACKET



# HAND BAR SERIES



K8010  
( ACRYLIC ) HAND BAR  
( 13MM )



K8011  
( ACRYLIC ) HAND BAR  
( 10 MM )



K7010  
( FIBER ) HAND BAR  
( 13MM )



K7011  
( FIBER ) HAND BAR  
( 10 MM )





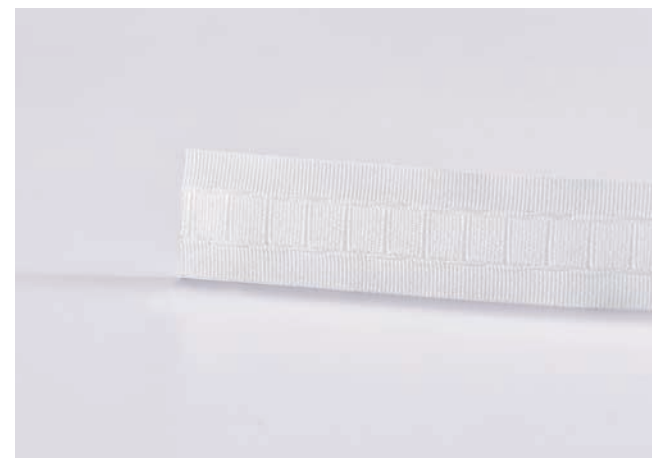
**K11010**  
AMERICAN TAPE



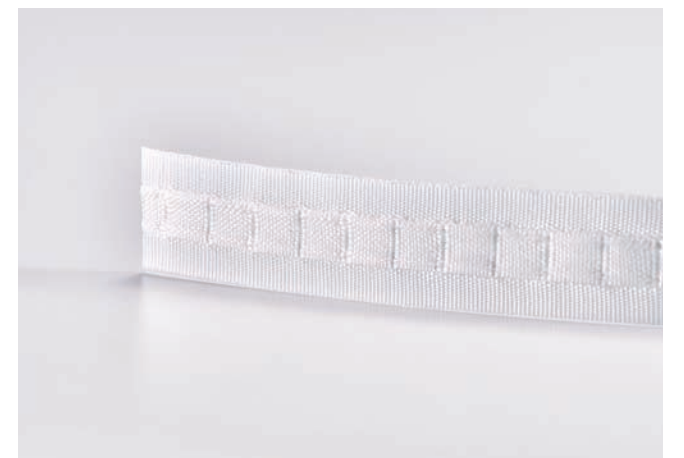
**K11011**  
PENCIL PLEAT TAPE  
(3 LINE)  
MADE IN TURKEY



**K11012**  
PENCIL PLEAT TAPE  
(3 LINE)



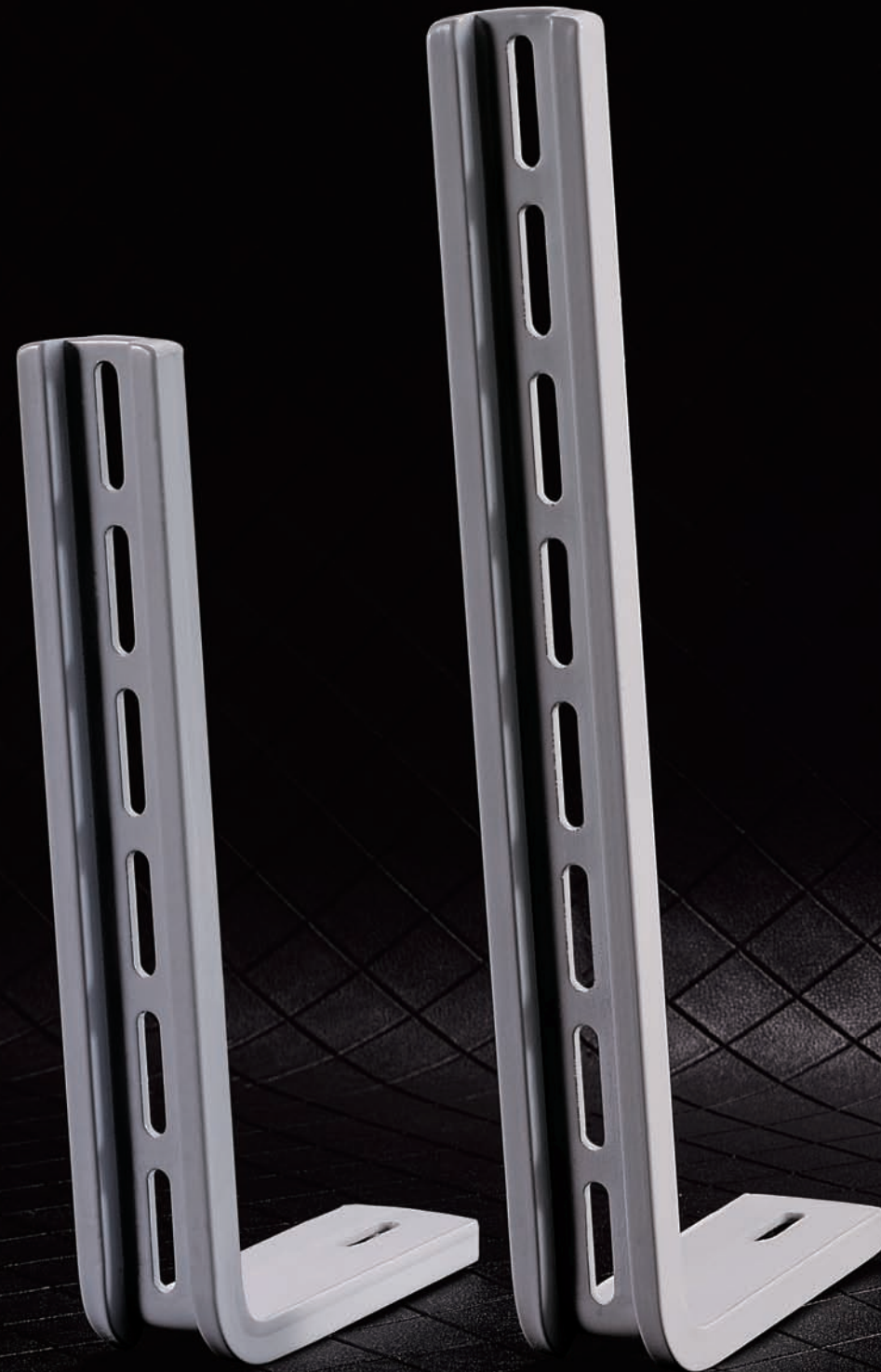
**K11013**  
SHARQY TAPE(2 LINE)  
MADE IN TURKEY



**K11014**  
SHARQY TAPE(2 LINE)

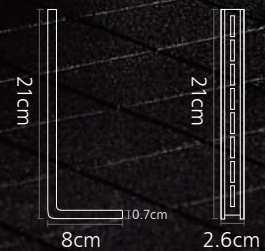
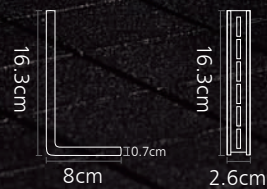


# L-BRACKETS



K9010  
L-BRACKETS (ALUMINUM)  
15 CM

K9011  
L-BRACKETS (ALUMINUM)  
20 CM



K22010  
AMERICAN HOOKS  
(LONG)



K22011  
BUTTERFLY HOOKS  
(SHORT)



K22012  
BUTTERFLY HOOKS

# HOOKS





#### HEAD OFFICE

ABU DHABI-U A E  
TEL: +971 2 6349300  
EMAIL: [alkilani@alkilanigroup.ae](mailto:alkilani@alkilanigroup.ae)

---

#### BRANCHES.

DUBAI-U A E  
TEL: +971 50 6160365  
EMAIL: [alkilani@alkilanigroup.ae](mailto:alkilani@alkilanigroup.ae)

KINGDOM OF BAHRAIN  
TEL: +973 7709200  
EMAIL: [alkilani@alkilaniibh.com](mailto:alkilani@alkilaniibh.com)

SHARJAH-U A E  
TEL: +971 2 5332159  
EMAIL: [alkilani@alkilaniishj2016@gmail.com](mailto:alkilani@alkilaniishj2016@gmail.com)

MUSCAT-OMAN  
TEL: +968 97103635  
EMAIL: [alkilani@alkilanioman@gmail.com](mailto:alkilani@alkilanioman@gmail.com)

DOHA-QATAR  
TEL: +974 44694490  
EMAIL: [alkilani@alkilaniqr.com](mailto:alkilani@alkilaniqr.com)